

**ASD-CSC**

CAPILLARY TUBE CONNECTOR



**ASD-CT**

CAPILLARY TUBE FOR SAMPLE POINTS



**ASD-P**

4 METRE PIPE (25MM)



**ASD-J**

2 INTO 1 PIPE JOINER (PARALLEL PIPES)



**ASD-LB**

LONG RADIUS 90° BEND



**ASD-EC**

25MM END CAP



**ASD-PC**

PIPE CLIPS



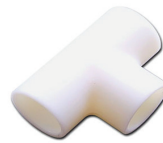
**ASD-PJ**

STRAIGHT COUPLING



**ASD-T**

SOLID 'T' JUNCTION PIPE



**ASD-TA**

TRUNK ADAPTOR FOR SAMPLE POINTS



**ASD-SP**

SAMPLING POINT



**SEC-POINTLAB**

SAMPLE POINT LABEL RED 50mm x 50mm



**SEC-POINTDECAL**

SAMPLE POINT DECAL (100 ROLL)



**ASD-SP KIT**

SAMPLE POINT KIT



**BLAZER**



**Product Overview**

- Blazer100 - 1 Pipe
- Blazer200 - 2 Pipe
- Blazer300 - 3 Pipe
- Blazer400 - 4 Pipe

Carrying out maintenance to the piping network of an aspiration system is a labour intensive job, certainly so if this network is poorly accessible. By using The Blazer you simply install the automatic maintenance unit near the detector in the piping network and that is all there is to it.